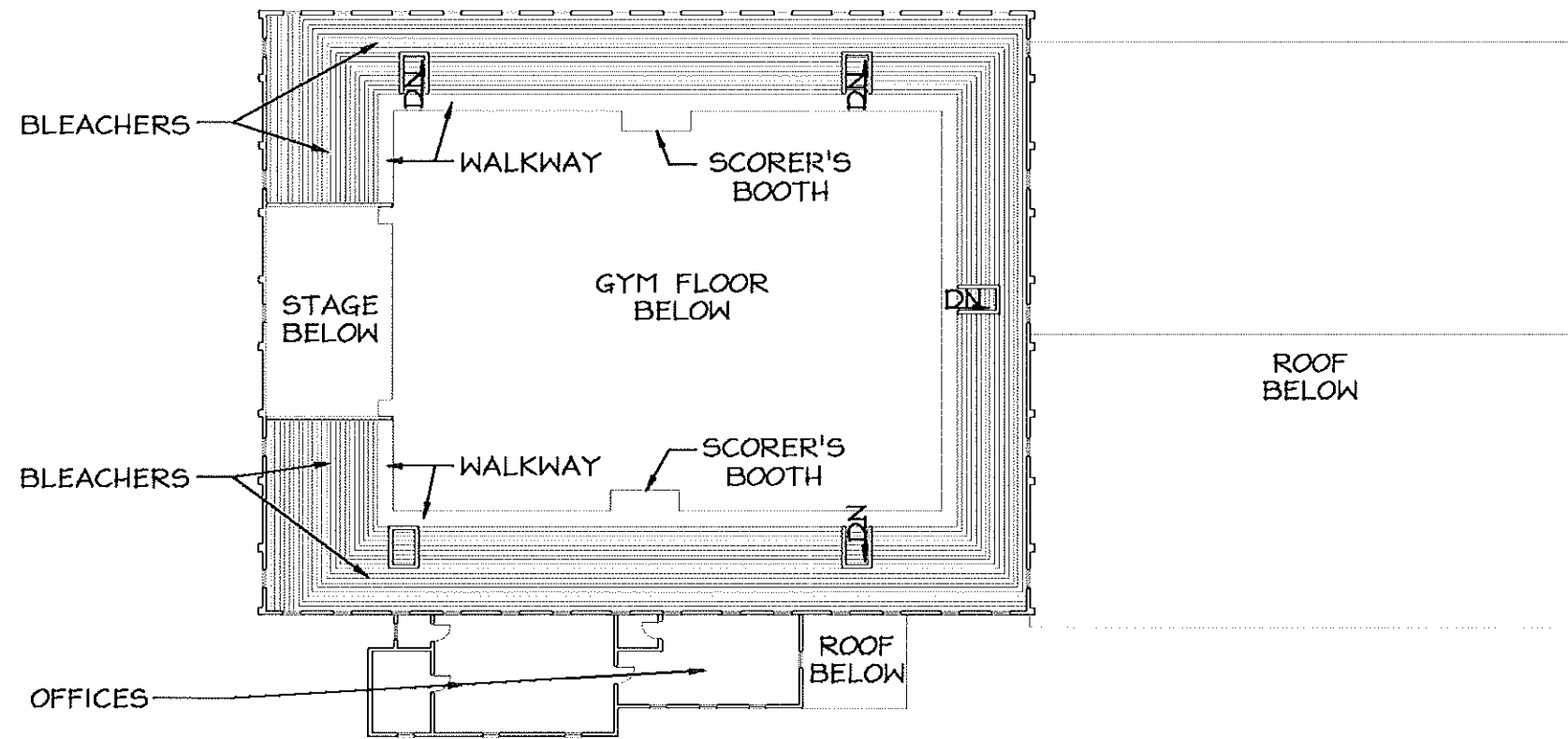


**FIRST FLOOR PLAN**  
 SCALE: 1" = 30'-0"

**Existing First Floor Plan**

Bluefield Municipal Auditorium  
 Preliminary Architectural Report  
 Revised May 27, 2008, Draft - April 1, 2008

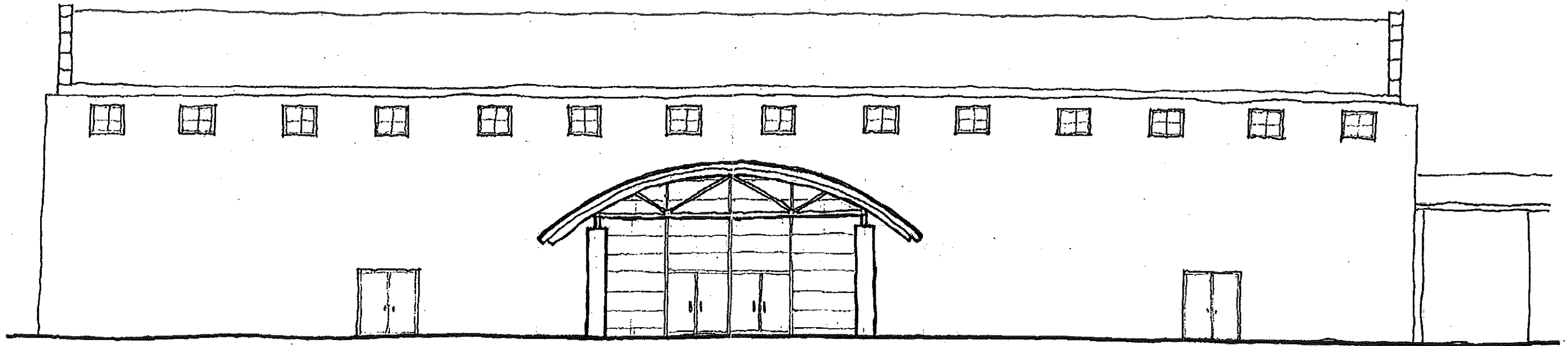




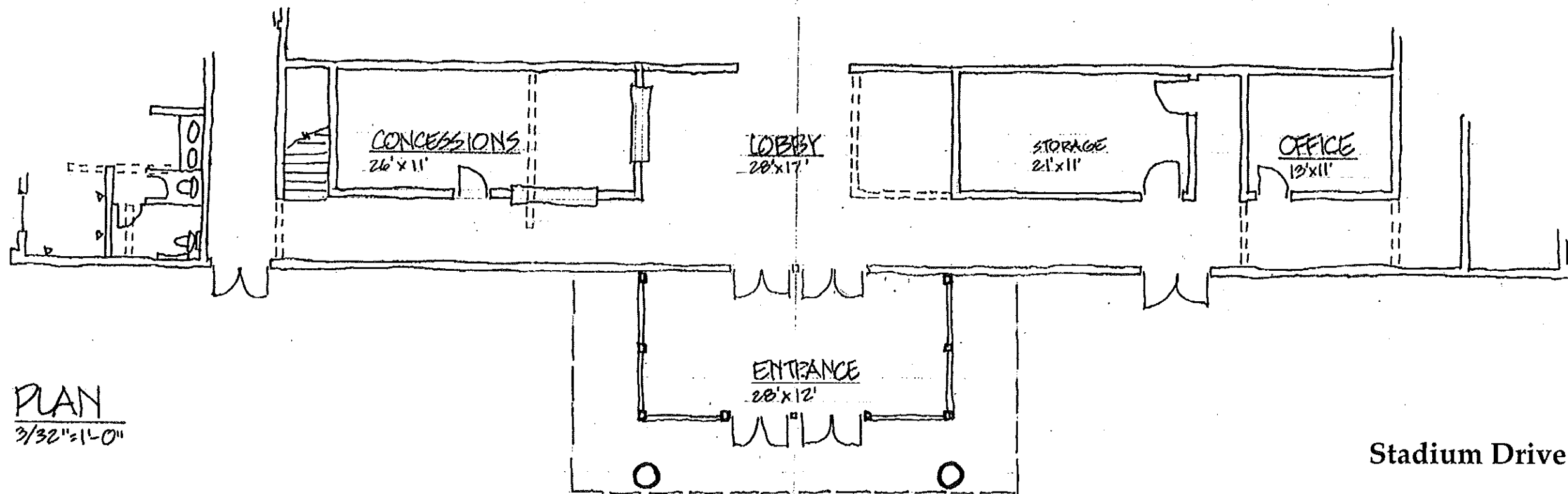
**SECOND FLOOR PLAN**  
 SCALE: 1" = 30'-0"

**Existing Second Floor Plan**

Bluefield Municipal Auditorium  
 Preliminary Architectural Report  
 Revised May 27, 2008 Draft - April 1, 2008



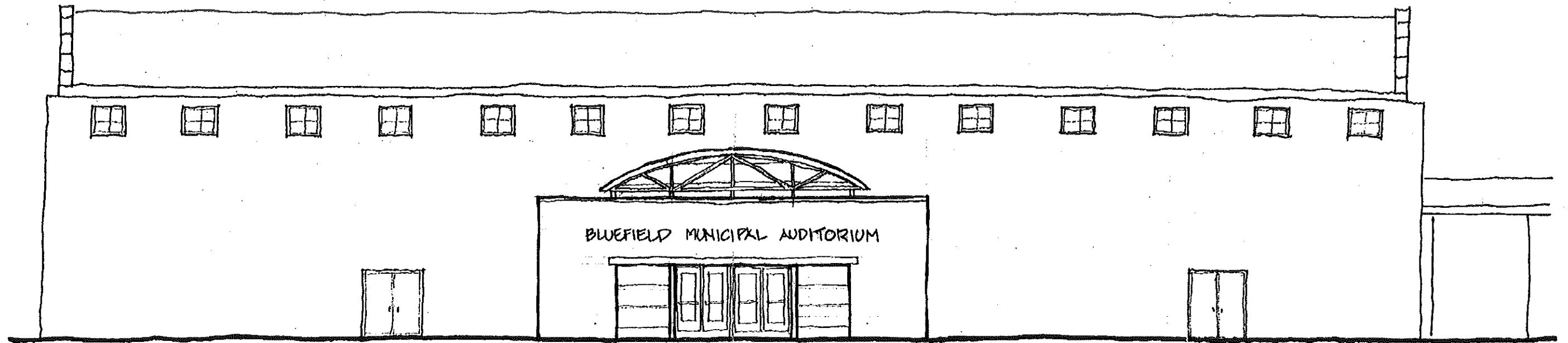
ELEVATION  
3/32" = 1'-0"



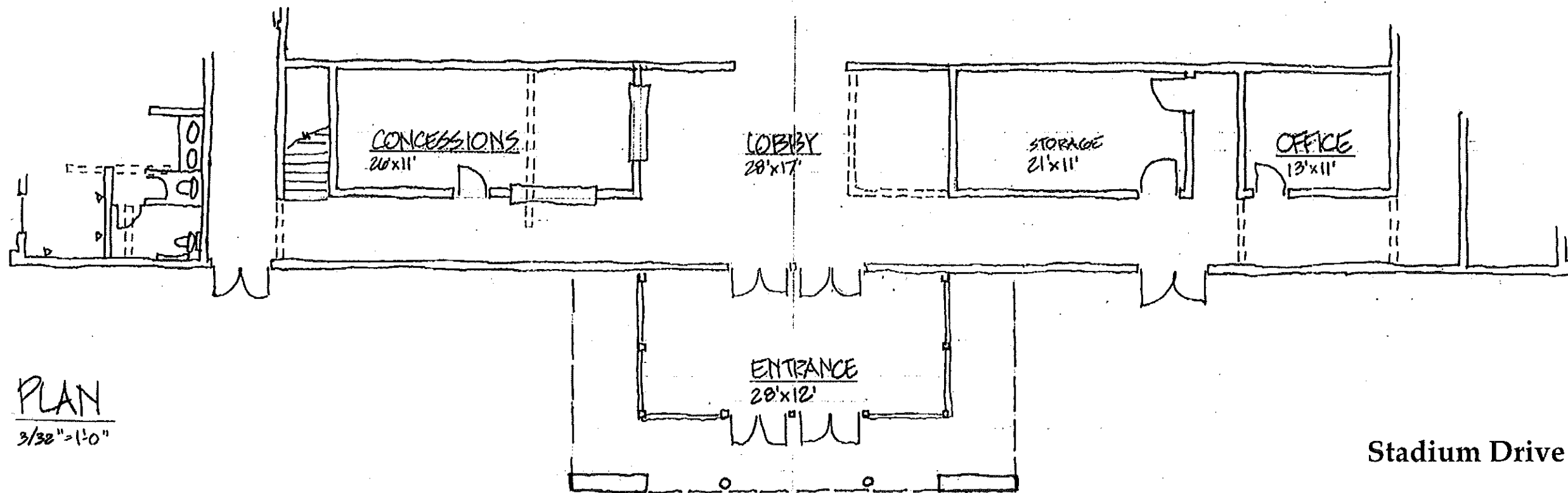
PLAN  
3/32" = 1'-0"



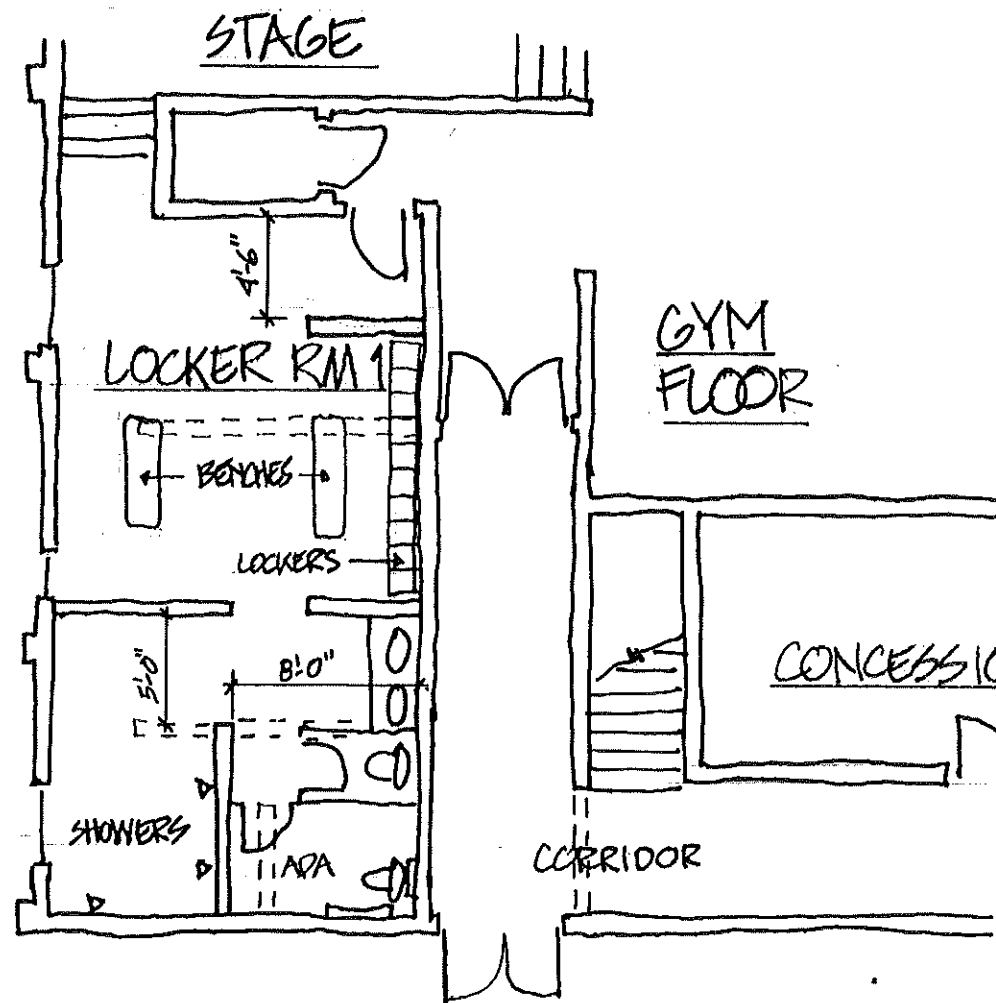
**Stadium Drive Elevation**  
**Option #1**  
Bluefield Municipal Auditorium  
Preliminary Architectural Report  
Draft - April 1, 2008



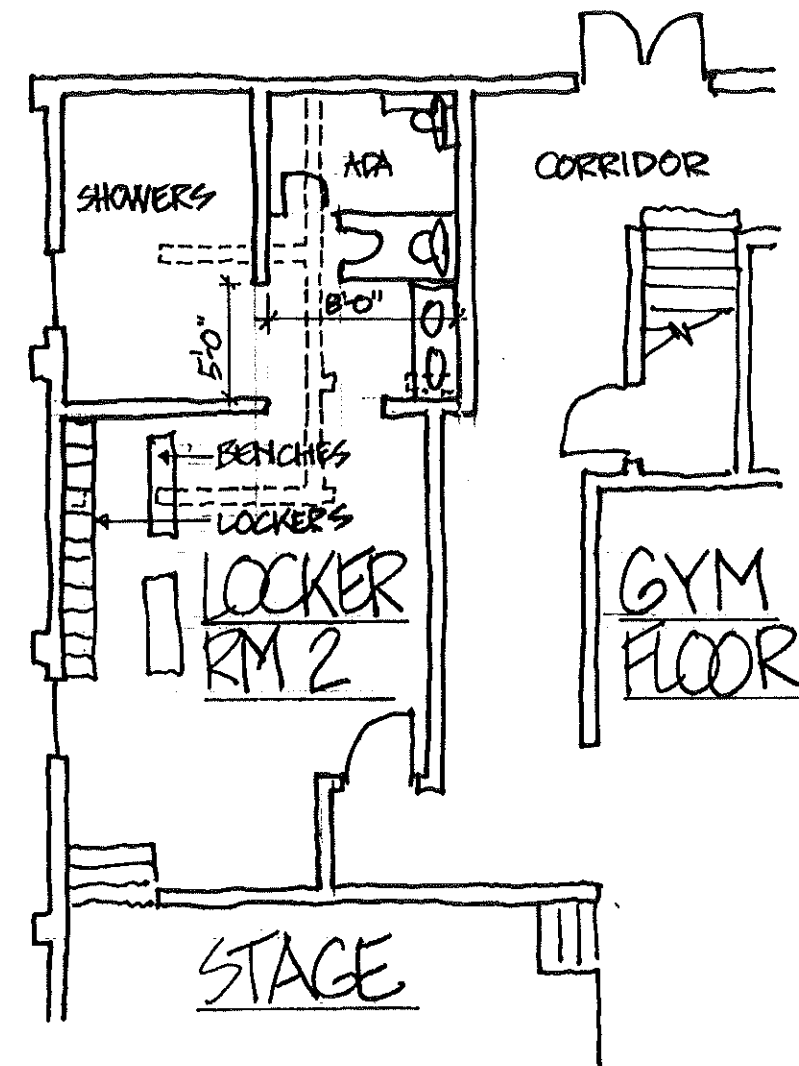
ELEVATION  
3/32" = 1'-0"



PLAN  
3/32" = 1'-0"



PLAN-LOCKER RM 1  
 1/8" = 1'-0"



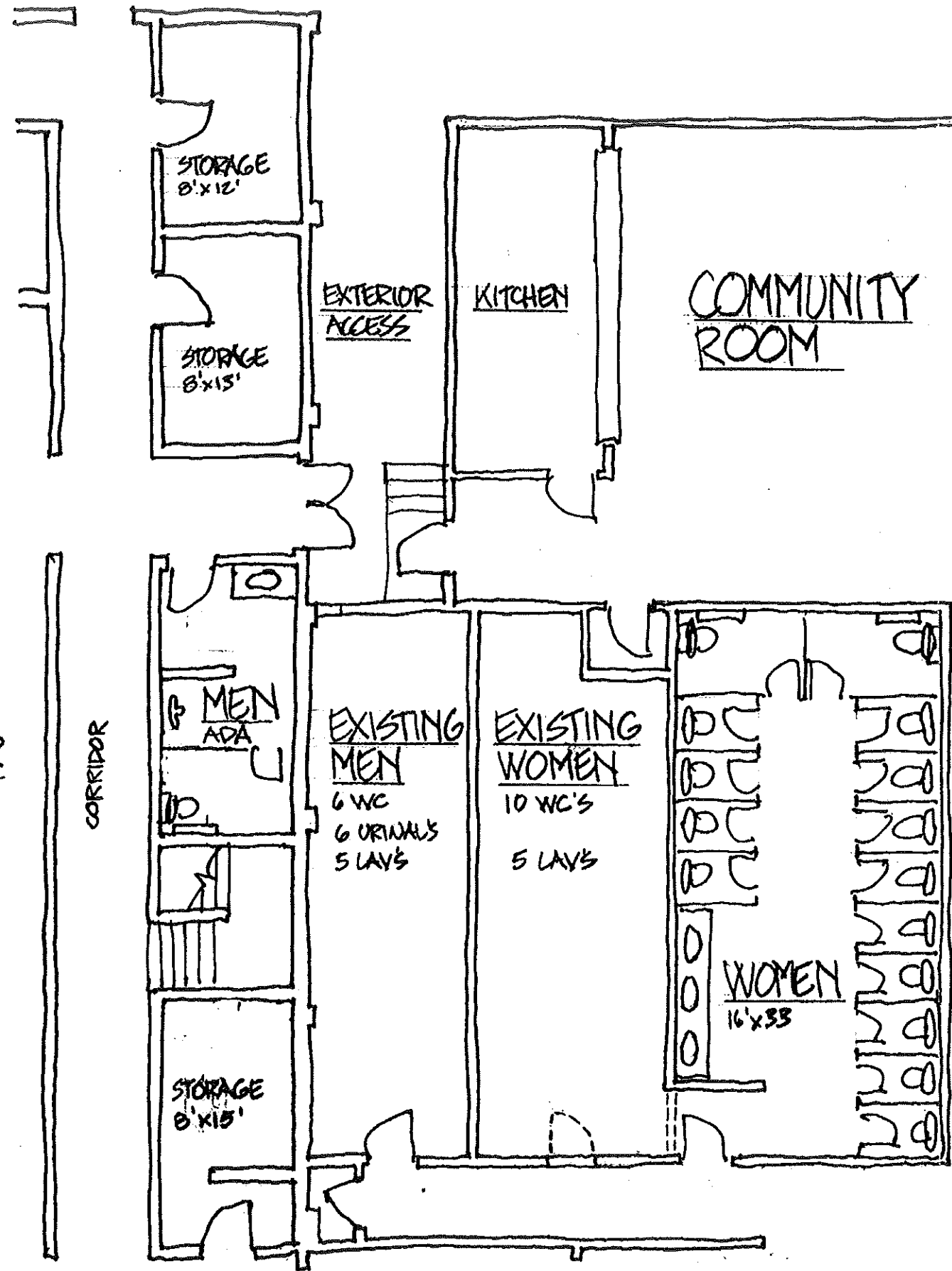
PLAN-LOCKER RM 2  
 1/8" = 1'-0"



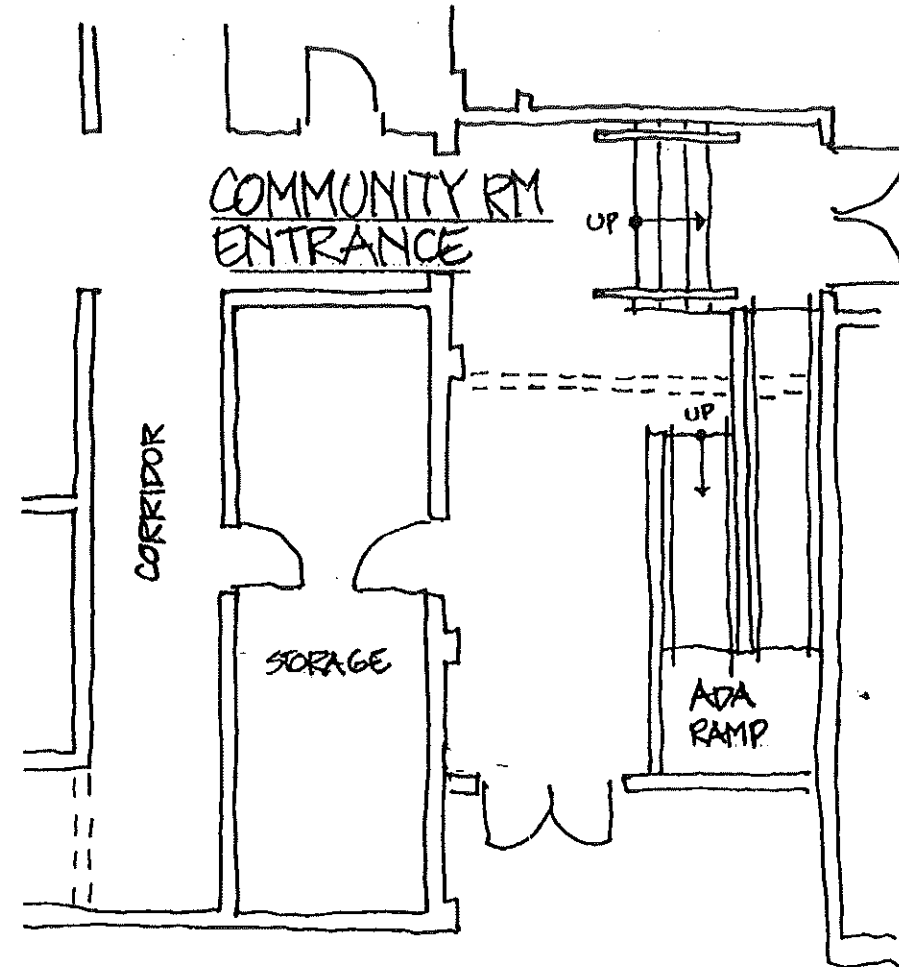
HILL  
STUDIO

**Interior Renovations**  
**Locker Rooms**  
 Bluefield Municipal Auditorium  
 Preliminary Architectural Report  
 Revised May 27, 2008 - Draft - April 1, 2008

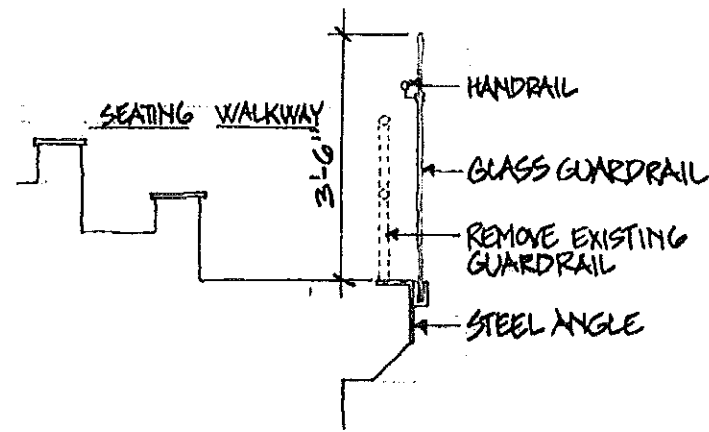
GYM FLOOR



PLAN-MEN'S, WOMEN'S TOILETS  
1/8" = 110"



PLAN-COMMUNITY ROOM ENTRANCE  
1/8" = 110"



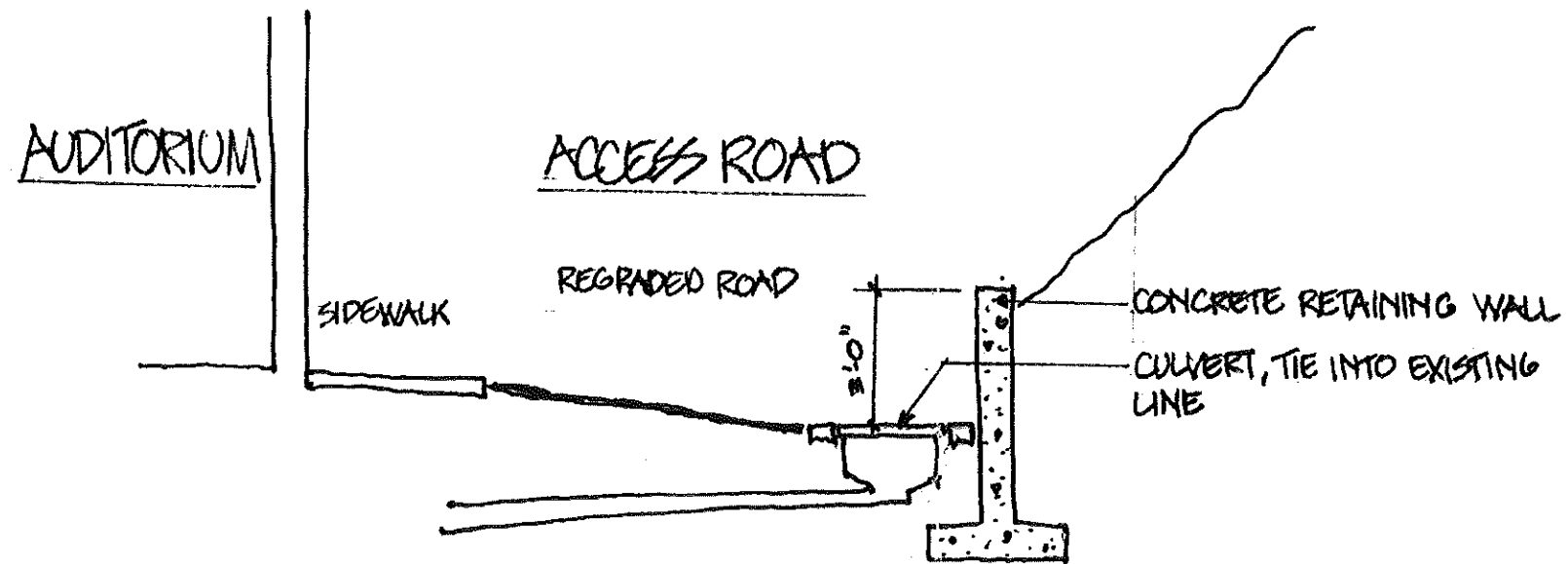
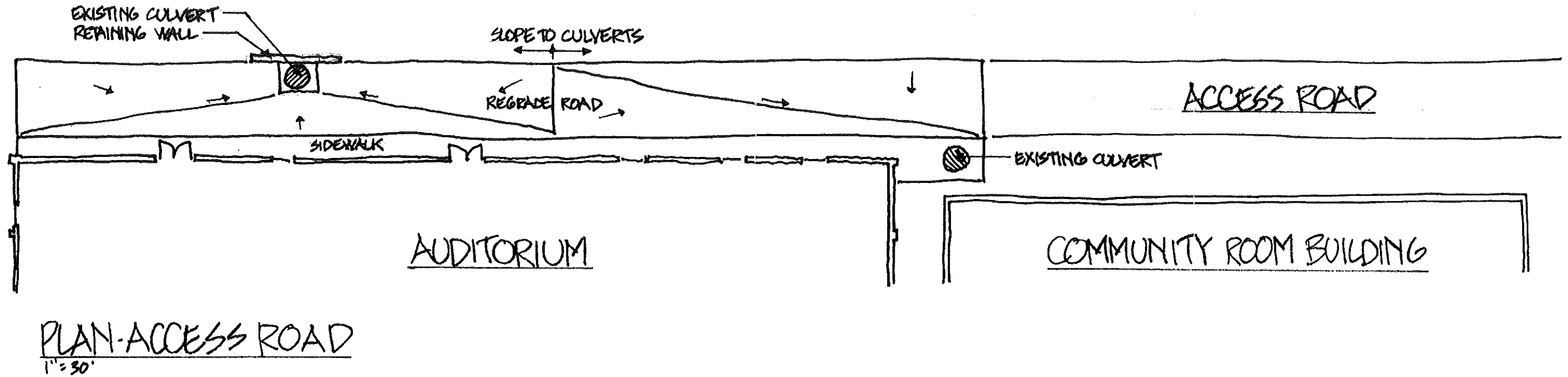
SECTION-RAILING, 2ND FLOOR  
3/8" = 110"



HILL STUDIO

**Interior Renovations  
Toilets,  
Comm. Room Entrance,  
Railing**

Bluefield Municipal Auditorium  
Preliminary Architectural Report  
Revised May 27, 2008 - Draft - April 1, 2008

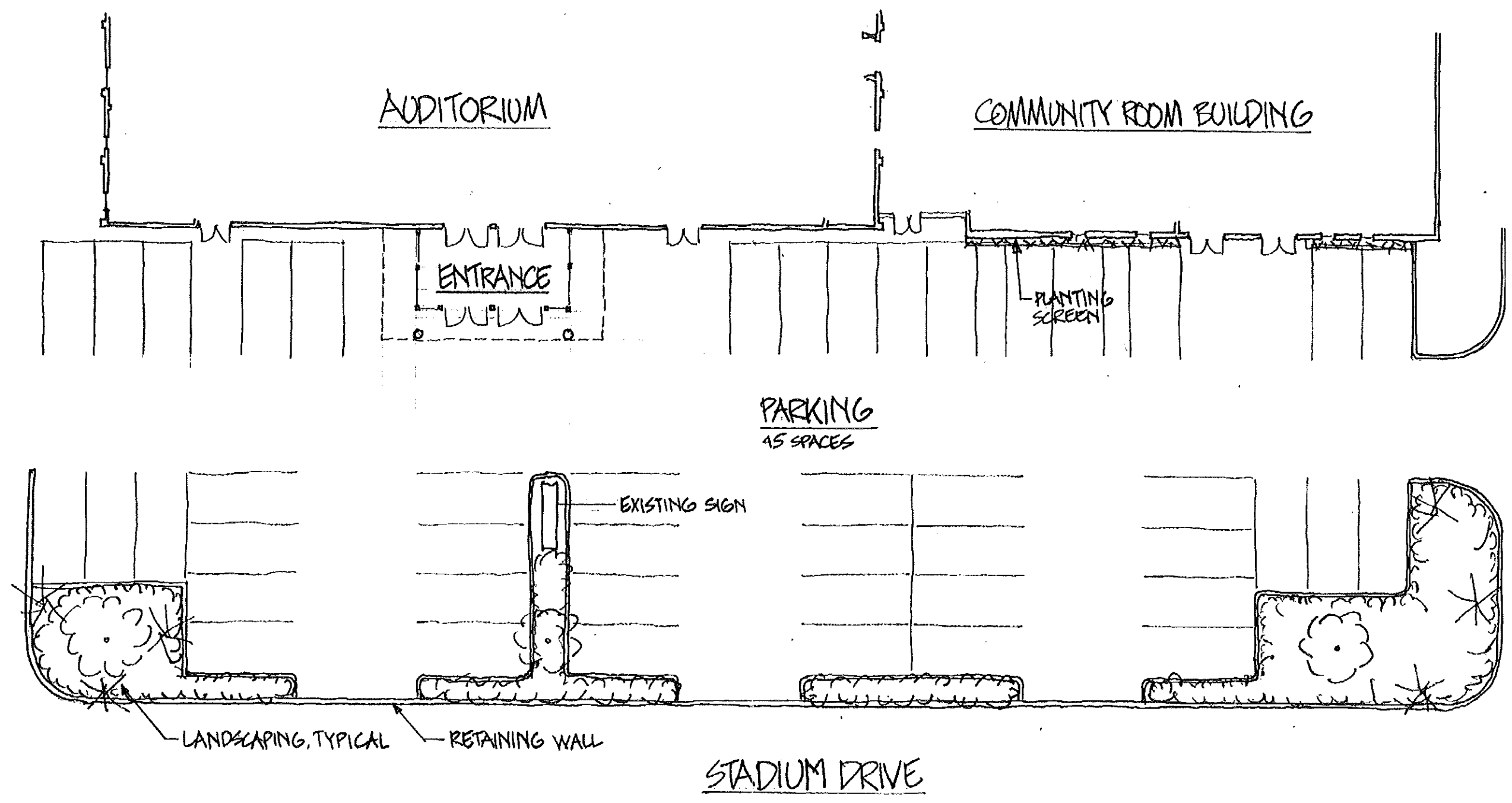


SECTION  
1/4" = 1'-0"

**Access Road Alterations**

Bluefield Municipal Auditorium  
Preliminary Architectural Report  
Revised May 27, 2008 - Draft - April 1, 2008





PLAN-PARKING  
1" = 20'

**Parking Plan**

Bluefield Municipal Auditorium  
 Preliminary Architectural Report  
 Draft - April 1, 2008

